

Installation Information

SmartPrivacy Venetian Blind

Parts Included



Mounting Bracket



Screw #1



Cord Cleat



Hold Down Bracket



Screw #2



Safety Cord Stop
(supplied on cords)

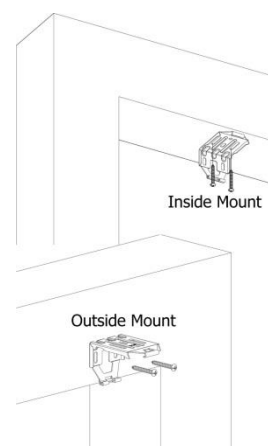
Important Notes

- Please check that all parts have been supplied before you begin to assemble your new Custom Venetian Blind
- Ensure that the blind is mounted level for correct operation

Positioning Blind

As per your order, determine the correct fitting location of mounting brackets and mark where you are going to install the brackets.

- Inside the window frame (Inside Mount) or;
- On the window frame or wall (Outside Mount)



Installing Mounting Brackets

Using a level and pencil, mark the bracket location on the mounting surface. Attach the brackets with screws provided (#1) (Figure 1)

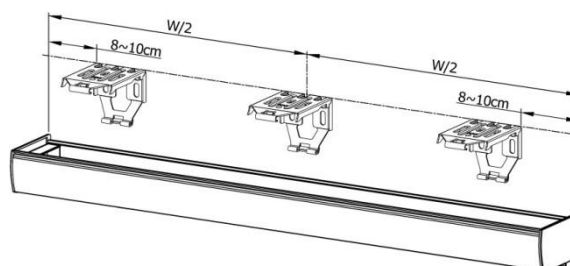


Figure 1

Attaching Blind To Brackets

i) Insert headrail into mounting brackets (Figure 2). For proper installation, start by attaching the front rail to the bracket, then push back up until the headrail clicks into the brackets.

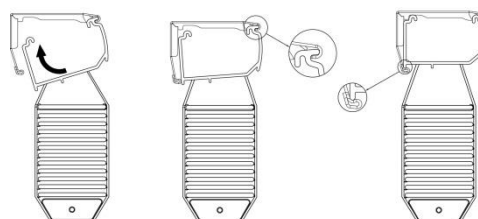


Figure 2

Hold Down Brackets

Using the screws provided (#2); attach the base of the hold down bracket to the window facing or sill (Figure 3). Additional fixing can also be fitted through the side of the bracket (where suitable). Snap bracket pin ends into the holes in the bottom rail end caps.

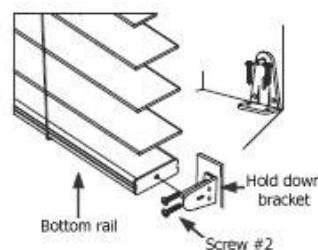


Figure 3

Installation Information

Operating the Blind

Ensure slats of the blind are horizontal before lowering/raising to extend the life of the blind.

To lower blind

Pull cord towards the centre of blind until the cord lock releases. Gently feed cord upwards until the blind is at the desired height then move cord towards the pull cord mechanism and release. The cord lock will engage.

Raising

Pull cord downwards until the blind reaches the desired height, gently release the cord and the blind will lock automatically.

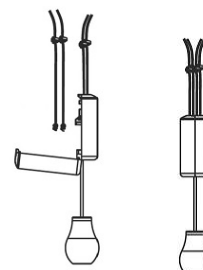
Tilting

Gently pull one of the tilt cords downwards to angle the slats as desired.

Reassemble Breakaway Tassel

The breakaway tassel is a safety device, and is intended to pop open when certain pressures are applied. Please follow the steps below to reassemble the tassel.

- Ensure breakaway tassel is open
- Place pull cords into grooves on one side of tassel
- Snap tassel closed



Venetian Blind Safety Information

Child Safety Instructions

For Blinds With Cord Control

Warning

- The cord cleat must be fitted to ensure child safety and to comply with regulations
- The cleat is to be positioned at least 1600mm above floor level, as a child is capable of unwinding a cord from a cleat
- Use the screws provided (#2) to attach each cleat to the wall. Do not use tape or glue to attach the cleat
- Wrap excess cord around the cleat every time the blind is raised/lowered, to prevent child strangulation
- The cord must not form a loop longer than 220mm and should be wound entirely around the cleat every time.



WARNING – ALL WINDOW COVERINGS WITH CORD OR CHAIN

To avoid creating a possible strangulation hazard for children, the corded or chained internal window covering must be installed in such a way that a loose cord or chain cannot form a loop 220mm or longer at a height of less than 1600mm above floor level.

- A cord/chain guide may be installed lower than 1600mm above floor level if the cord/chain is sufficiently secured or tensioned to prevent a loop 220mm or longer being formed
- If a cord/chain guide is installed lower than 1600mm above floor level, it must be designed to prevent a child from being able to remove the cord/chain
- If a cleat is used to secure the cord, it must be at least 1600mm above floor level because a child is capable of unwinding a cord from a cleat